



Instruction Sheet: UV Rod Panel 303318

Store these instructions along with the enclosed maintenance checklist in a safe place. You may also access them on our website.



Take time to familiarize yourself with the use and maintenance of this equipment before using. Please file this Instruction Sheet in an accessible location. The Instruction Sheet must be read and familiar to anyone who is using Southpaw Enterprises Equipment.

IMPORTANT: Please check equipment immediately for any damage that may have resulted during shipping.

MATERIALS LIST:

1 - UV Rod Wall Panel
96 - 4" length Colored Rods
Maintenance Checklist

6 - 1-1/2" Wood Screws-XH90430
2 - 2 x 4's (22" length)
4 - Wall Toggle Anchors-XH90651

TOOLS NEEDED:

Drill
1/2" Drill Bit
#2 Phillips Head Bit
Instruction Sheet

INSTALLATION:

Position one 2 x 4 lengthwise, level on the wall, at top height desired for where the wall panel will be placed. Drill 1/2" holes through 2 x 4 into wall. Set toggle wall anchors and secure 2" x 4" to the wall. See images at right for directions of how to set the toggle anchors. Set uv rod wall panel on 2" x 4", then with a pencil, mark a small line where the bottom of the wall panel is located. Remove uv rod wall panel. From the mark that has been made on the wall, mark another line 1/2" above that line and position 2" x 4" on the on the second mark, making certain it is level. Repeat above steps for mounting 2 x 4. Replace activity wall, secure wall to the 2" x 4" frame with three wood screws on the top and three wood screws on the bottom. Plug the power cord into wall outlet to power on unit.

MAINTENANCE CHECKLIST

✓All of the following wear points should be checked on a monthly basis and recorded on the checklist enclosed:

- Check the wood surface and edges for splinters. If found, discontinue use until repaired. A splintered area may be repaired by sanding the area smooth with a fine or medium grit sandpaper and then applying two coats of clear lacquer to the repair area.
- Check all components to make certain they remain secured to activity wall.

MATTING PRECAUTIONS:

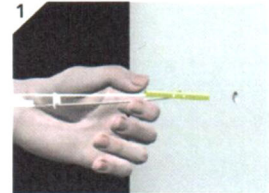
- Always use appropriate matting under and around equipment.

CLEANING INSTRUCTIONS

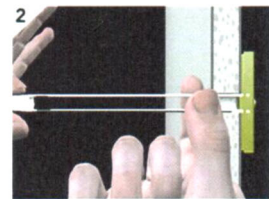
- Check with your infectious disease department before using these procedures.
- Check for client allergies first.
- Clean with a damp rag and a mild surface cleaning solution.
- Let air dry or wipe dry with a cloth.

Wall Toggle Anchor Installation instructions:

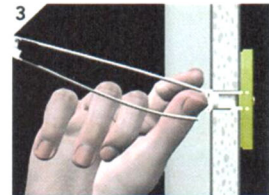
Step-By-Step



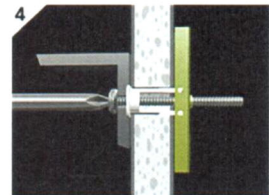
Drill a 1/2" (Ø13mm) hole. Hold metal channel flat alongside plastic straps and slide channel through hole. Minimum clearance behind wall: 1-7/8" (48mm).



Hold ends of straps between thumb and forefinger and pull toward you until channel rests flush behind wall. Slide plastic cap along straps with other hand until flange of cap is flush with wall.



Snap straps at wall by pushing side to side, snapping off straps level with flange of cap.



Place item over flange. Insert bolt through item and tighten until flush against item, then stop.

Safety Precautions - The safety of your clients is dependent on the appropriate choice of activity to match, yet challenge their physical abilities. Use appropriate spotting / safety techniques. In addition, the layout of your activity area, proper installation and maintenance of your equipment is critical. Southpaw equipment is not intended for recreational or outdoor use. Under no condition should this equipment be used without proper supervision.

This sheet is for example only. It is not meant to, in any way, replace local, county, state, or Federal standards. Be aware - it is your responsibility to find all pertinent safety information that pertains to your facility.

If you have any questions or comments, please call or write Southpaw Enterprises, Inc.

P.O. Box 1047, Dayton, Ohio 45401-1047

Toll Free - (800) 228-1698

Please visit us at southpaw.com

© 2024 Southpaw Enterprises, Inc.

